

PORTFORWARD

TOWARDS A SMART INNOVATION FOR THE EU PORT OF THE FUTURE

Christian Blobner, Olaf Poenicke | April 23, 2021



PortForward

Main objectives



Smart Port Solutions

employing ICT solutions to improve information flows between ports and port communities



Green Port Solutions

Adopting green technologies to reduce the environmental impacts of port operations and save resources



Interconnected Port Solutions

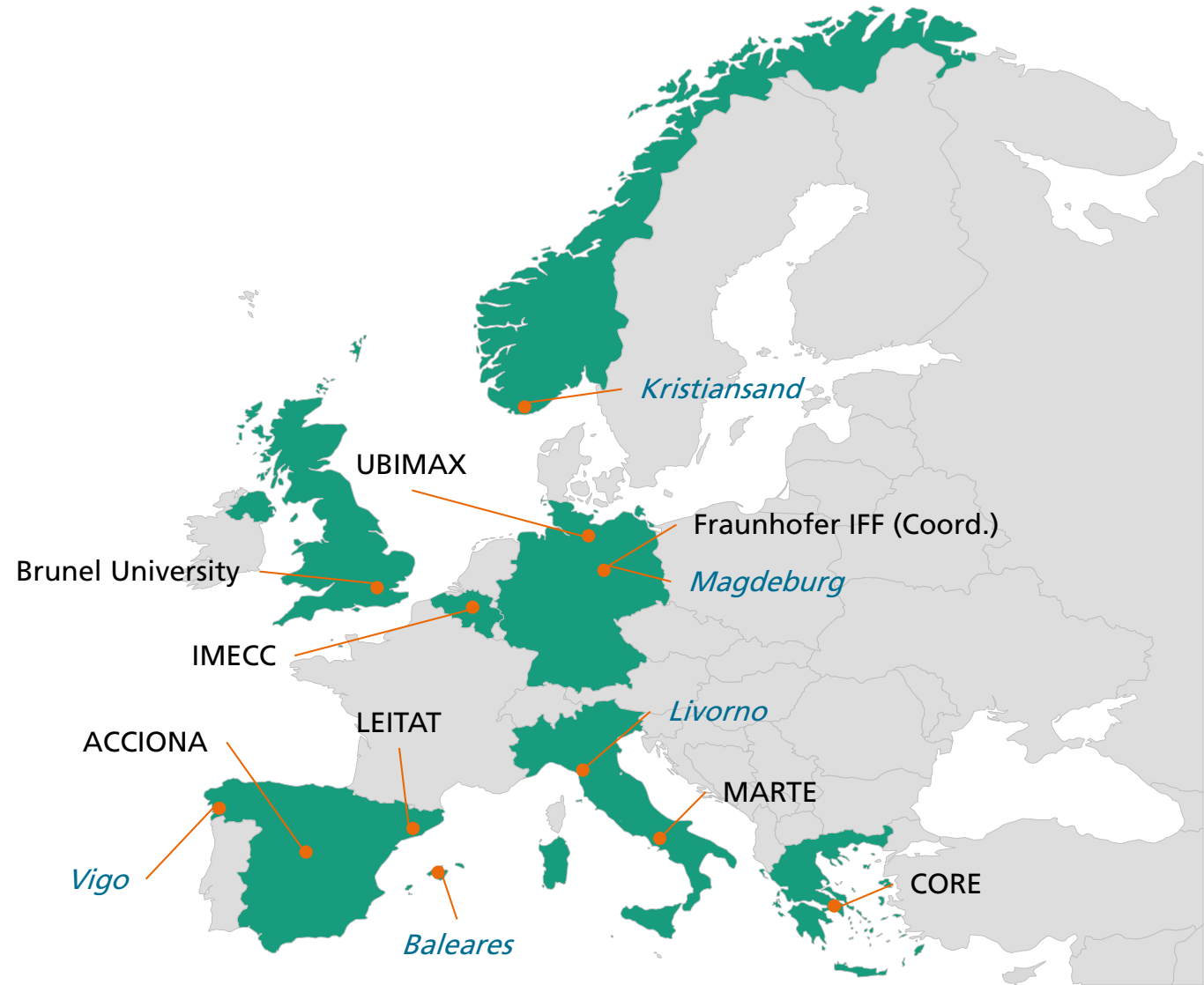
Integrating different technologies to better monitor and control freight flows

Focus of the project is on small and medium sized ports and their specific requirements

PortForward

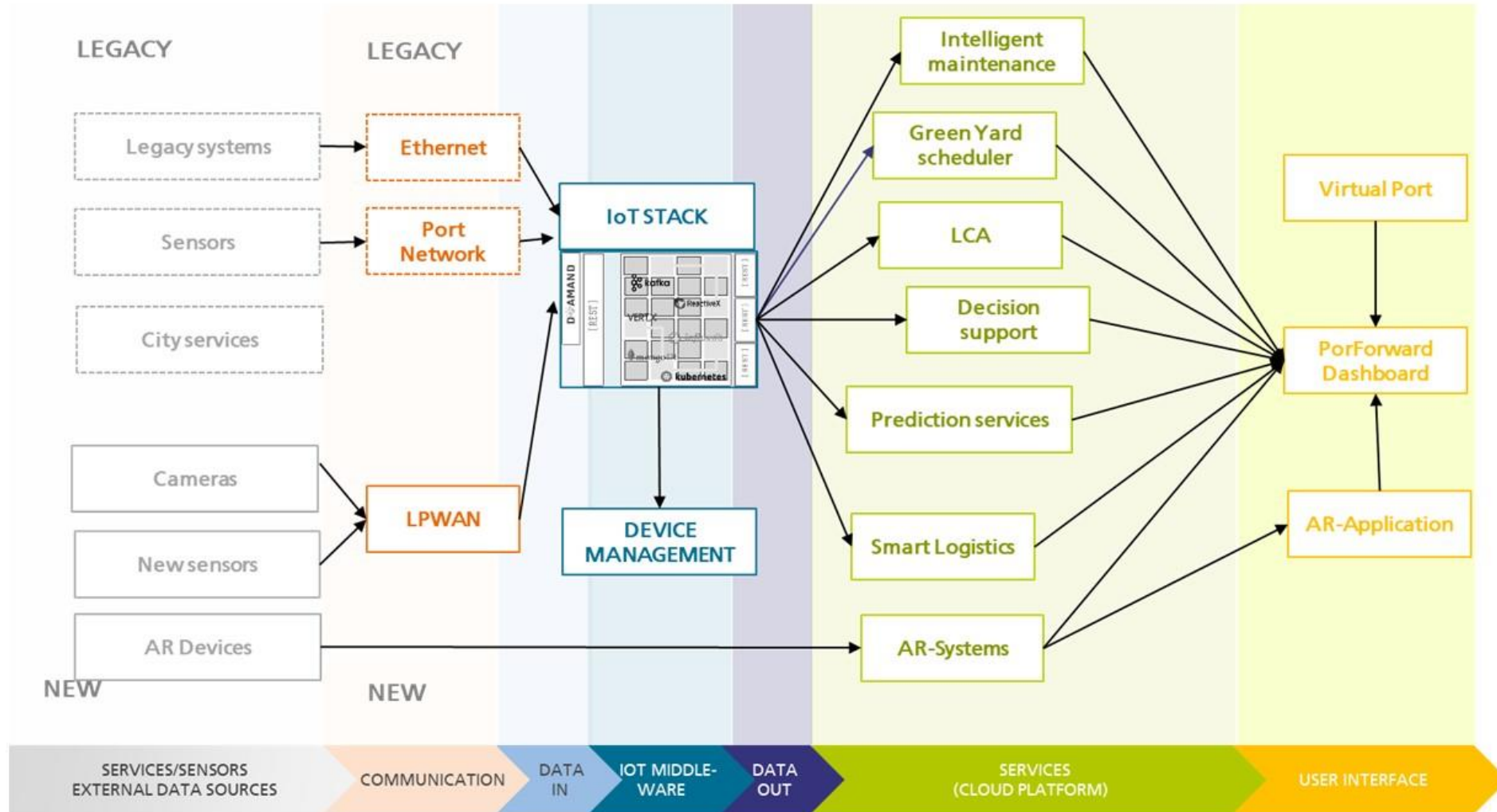
Project overview

- Project duration
 - July 1, 2018 – December 31, 2021 (42 Months)
- Project Budget
 - €4,994,311



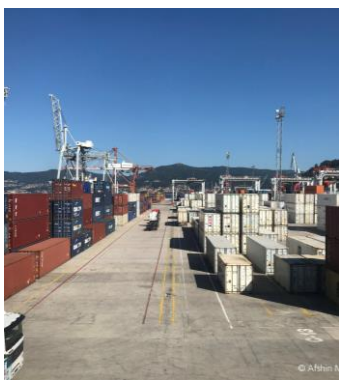
But what is PortForward

A picture for a thousand words – technical architecture



How does PortForward work

Close cooperation between ports and research partners



How does PortForward work

Close cooperation between ports and research partners



6



How does PortForward work

Close cooperation between ports and research partners



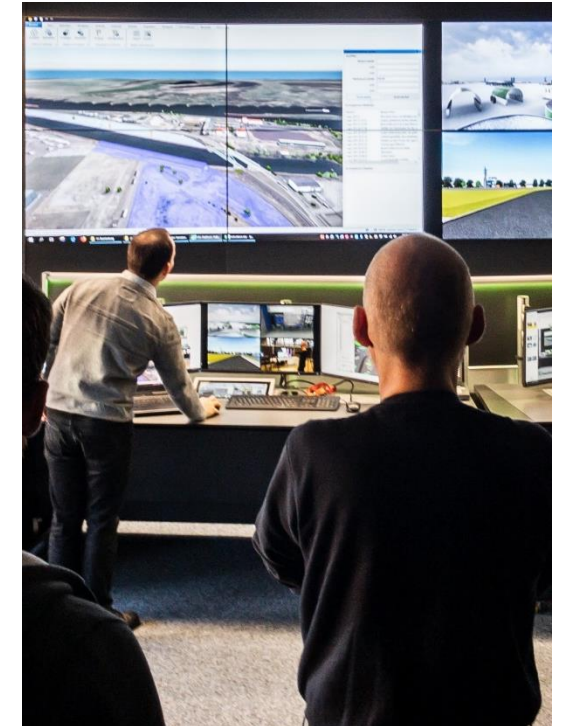
Area and
infrastructure
planning, marketing



Test and use of
innovative
technologies



Training, acceptance
for digital
transformation



Optimization and
control of processes
and infrastructure

PortForward Use Cases

Green Yard Scheduler (GYS)

The GYS is a decision support system for more efficient and sustainable container terminal operations.
Project use case @ Vigo Container Terminal



Increase the container terminal productivity



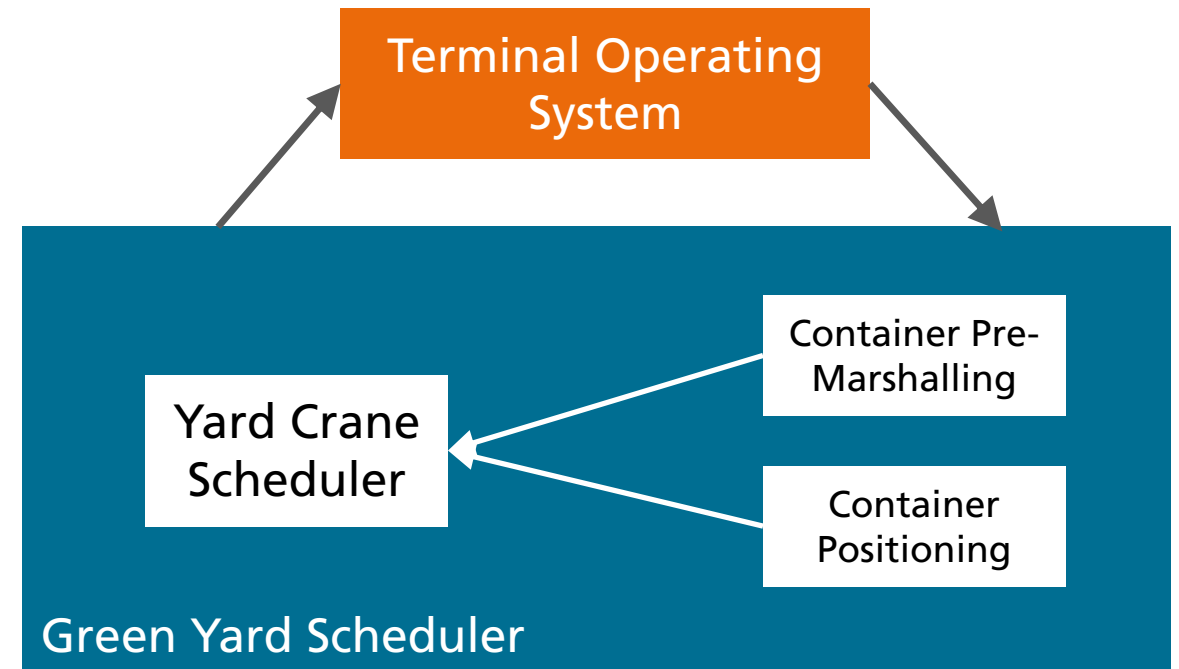
Reduce the carbon footprint of the terminal



Integrate with the terminal operating system



Harmonise container yard operations



PortForward Use Cases

Green Yard Scheduler (GYS)

The GYS is a decision support system for more efficient and sustainable container terminal operations.
Project use case @ Vigo Container Terminal



Increase the container terminal productivity



Reduce the carbon footprint of the terminal



Integrate with the terminal operating system



Harmonise container yard operations

T5.1 SUSTAINABILITY ASSESSMENT (INITIAL RESULTS)



Carbon footprint: 45.549 kg CO₂ eq. / TEU



21.308 kg CO₂ eq.



47%



14.161 kg CO₂ eq.



31%



4.584 kg CO₂ eq.



10%



4.048 kg CO₂ eq.



9%



1.448 kg CO₂ eq.



3%

----- Focus of GYS -----

PortForward Use Cases

AR-based Remote Assistance

AR-Smart Glasses are used to provide container information to terminal workers for container inspection. **Project Use Case @ Port of Livorno**

Container information and status provided by legacy system.

Terminal workers get remote information about required actions – e.g.:

- Open container
- Take picture
- Locate container
- Etc.



PortForward Use Cases

Dynamic Storage Space Monitoring (DSSM)

The DSSM is a technical solution to monitor the occupation storage spaces in multi-purpose terminals.
Project Use Case @ Hanse-Terminal, Inland Port of Magdeburg

Multi-purpose terminals are used for storage and handling of various types of cargo – making the management of storage locations complex

A **Virtual Twin Model** of the Port is used to dynamically display the occupation of storage spaces in a **Virtual Storage Space Grid**

LiDAR sensors will be used to capture 3D information of the current state and to locate and classify stored objects for the Virtual Twin



PortForward Use Cases

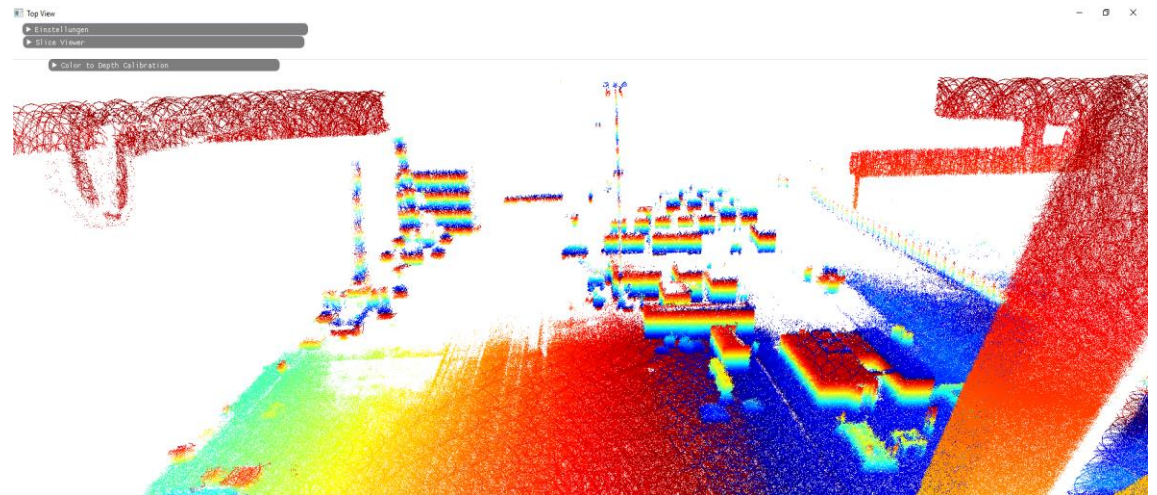
Dynamic Storage Space Monitoring (DSSM)

The DSSM is a technical solution to monitor the occupation storage spaces in multi-purpose terminals.
Project Use Case @ Hanse-Terminal, Inland Port of Magdeburg

Multi-purpose terminals are used for storage and handling of various types of cargo – making the management of storage locations complex

A **Virtual Twin Model** of the Port is used to dynamically display the occupation of storage spaces in a **Virtual Storage Space Grid**

LiDAR sensors will be used to capture 3D information of the current state and to locate and classify stored objects for the Virtual Twin



PortForward Use Cases

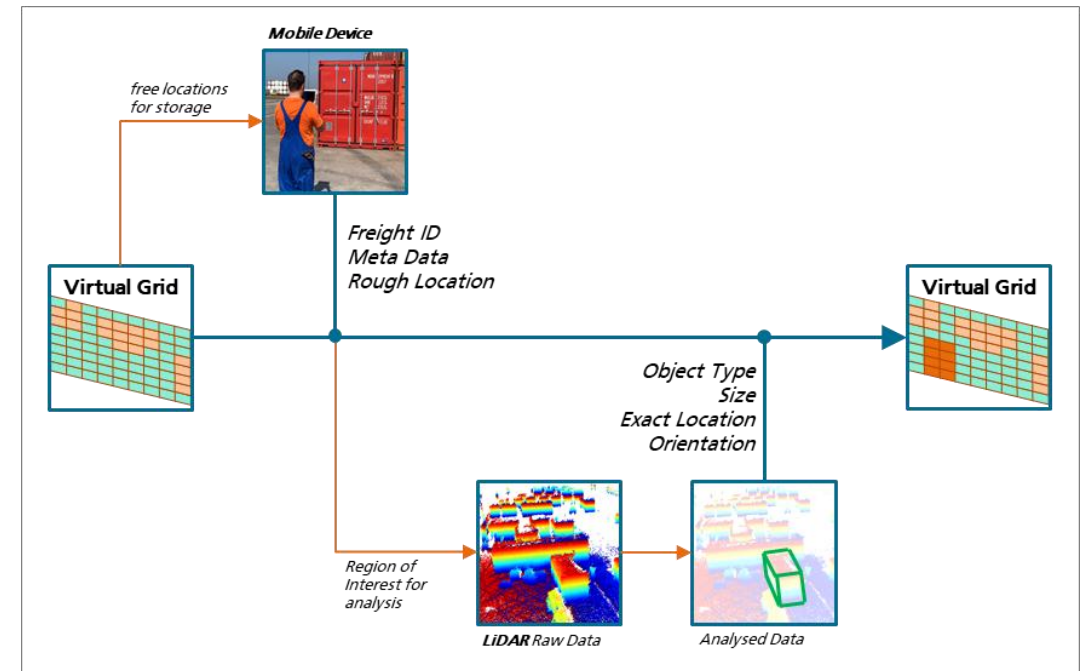
Dynamic Storage Space Monitoring (DSSM)

The DSSM is a technical solution to monitor the occupation storage spaces in multi-purpose terminals.
Project Use Case @ Hanse-Terminal, Inland Port of Magdeburg

Multi-purpose terminals are used for storage and handling of various types of cargo – making the management of storage locations complex

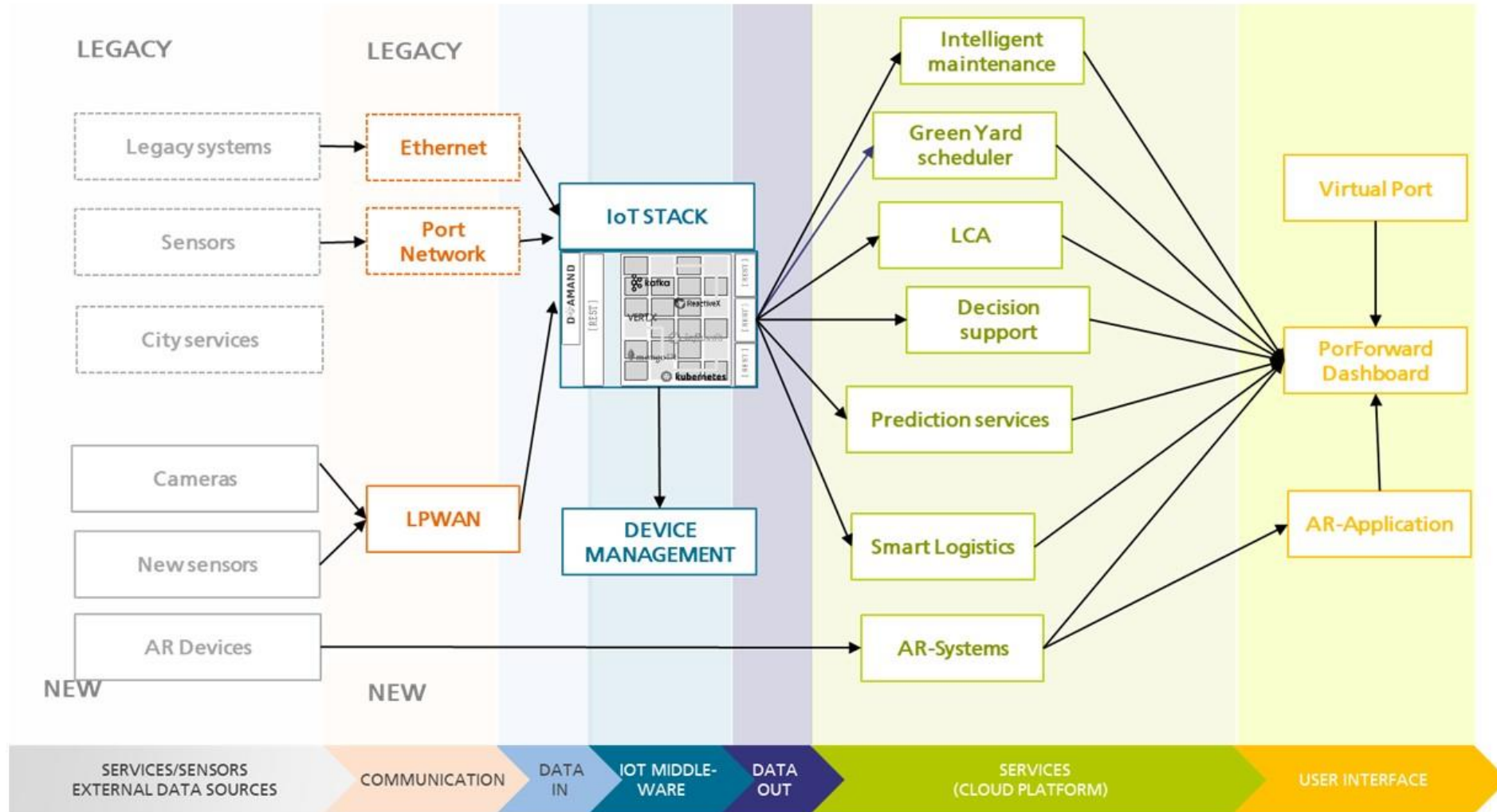
A **Virtual Twin Model** of the Port is used to dynamically display the occupation of storage spaces in a **Virtual Storage Space Grid**

LiDAR sensors will be used to capture 3D information of the current state and to locate and classify stored objects for the Virtual Twin



But what is PortForward

A picture for a thousand words – technical architecture



More information

The PortForward website

Visit us at:



www.portforward-project.eu

Social media:

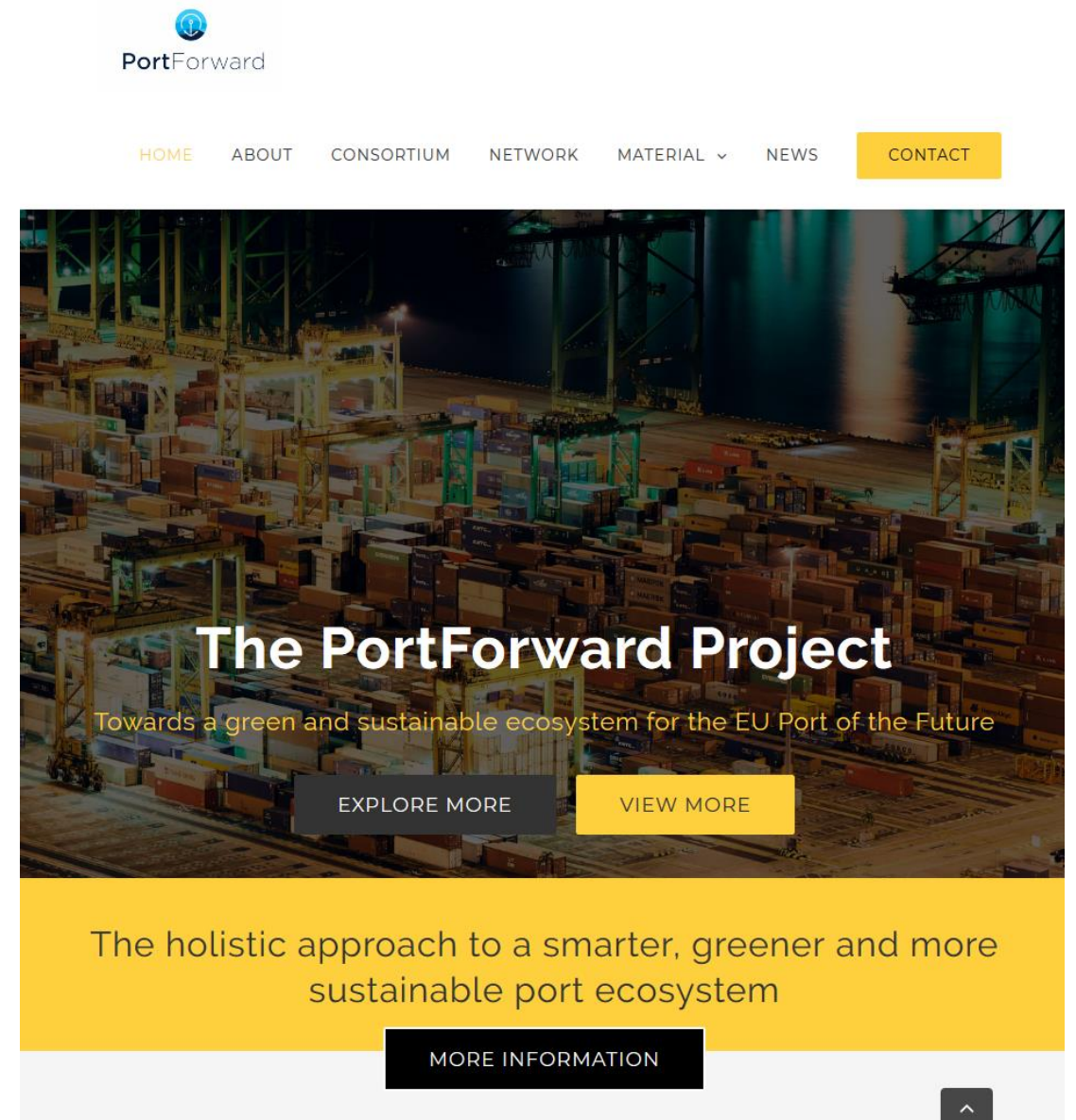


[portforward-project](https://www.linkedin.com/company/portforward-project)



[@portforward_eu](https://twitter.com/portforward_eu)

Get the latest project news, access to project dissemination materials and public deliverables.





Coordinator's Contact

**Fraunhofer-Institut für
Fabrikbetrieb und -automatisierung IFF**

Olaf Poenicke

Sandtorstr. 22
39106 Magdeburg

Research Manager

Tel.: +49 391 4090 337

Fax: +49 391 4090 93 337

www.iff.fraunhofer.de

olaf.poenicke@iff.fraunhofer.de