



COREALIS Final Event



COREALIS At a Glance

Dr Angelos Amditis

Project Coordinator
Research Director, ICCS/i-Sense Group

April 23rd, 2021



Facts & Figures

COREALIS - Capacity with a pOsitive enviRonmEntal and societAL footprint: portS in the future era

H2020-EU.3.4 Project for SOCIETAL CHALLENGES - Smart, Green And Integrated Transport, funded under topic MG-7.3-2017 - Mobility for Growth

COREALIS Grant Agreement signed by the EC on **26 March 2018**

Project start date: **1 May 2018**

Coordinator: Institute of Communications and Computer Systems

Partners: 17 from 9 countries

Duration: 36 months

EU Funding: **5,150,540.00€**

Project end date: **30 April 2021**

Living labs: **5** European Port-Cities including **3 out of the top-5 in Europe**





COREALIS vision-main goals

COREALIS proposes a **strategic, innovative framework**, supported by **disruptive technologies**, including Internet of Things (IoT), data analytics, next generation traffic management and emerging 5G networks, so that cargo ports can face current and future challenges regarding:



Optimization of port operations



Reduction of environmental footprint



Increase of efficiency & reduction of traffic within and around ports



Sustainability of the socioeconomic development of the port and its surrounding area



Antwerp Port, Belgium



Piraeus Port, Greece



Valencia Port, Spain



Livorno Port, Italy



Haminakotka Port, Finland





COREALIS Innovations

Port of the Future Serious Game
(simulation tool for decision making)

RTPORT

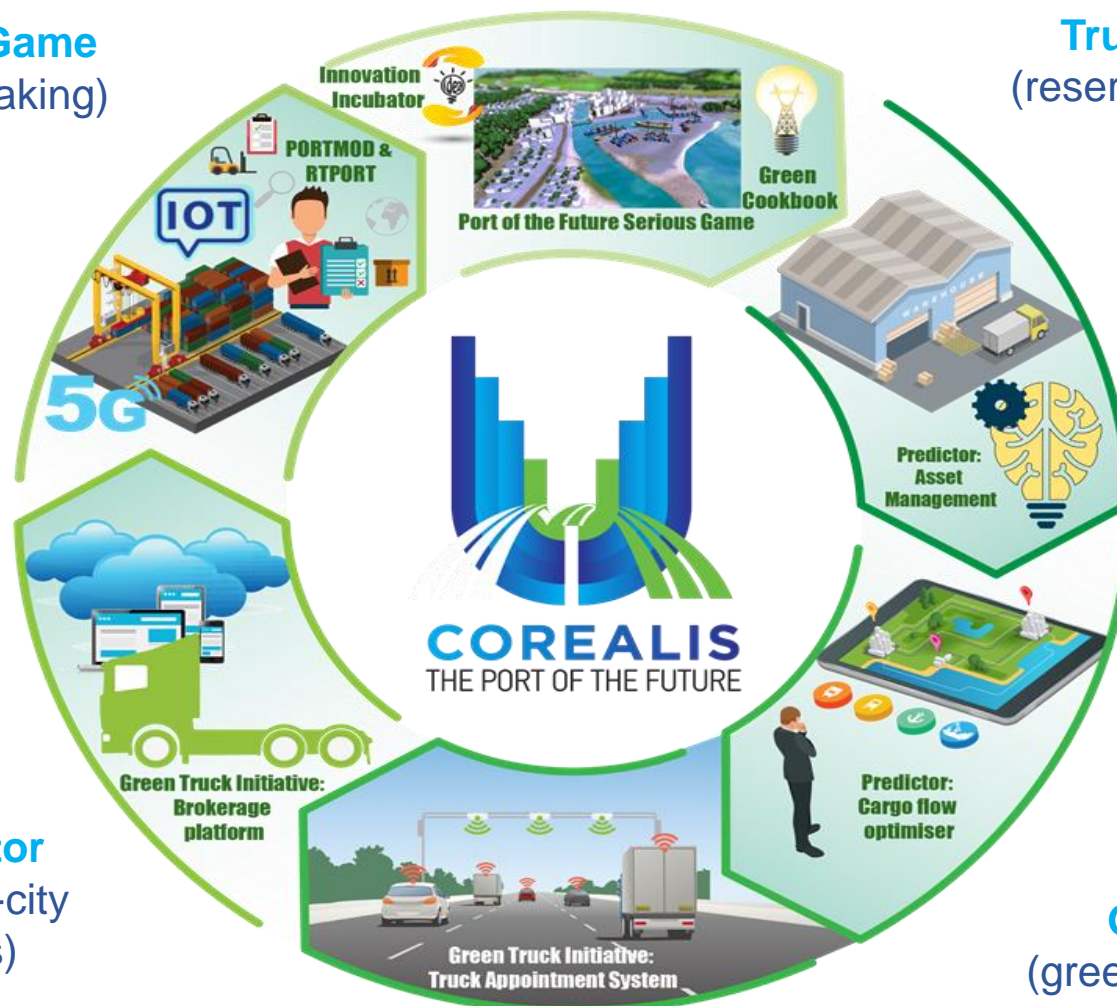
(5G-enabled smart terminal operations, IoT)

Brokerage Platform
(cloud based marketplace for leasing intra-CT trucks)

PORTMOD

(optimization planning tool for CT operations)

Innovation Incubator
(development of port-city innovation clusters)



Truck Appointment System
(reservation system including real-time traffic data)

Just-In-Time Rail Shuttle Service
(feasibility study for key port-hinterland corridors)






Cargo Flow Optimiser
(optimization of cargo flows ocean/rail/inland-waterway)

Predictor for Asset Management
(machine learning predictive maintenance)

Green Cookbook
(green energy mix for CTs)

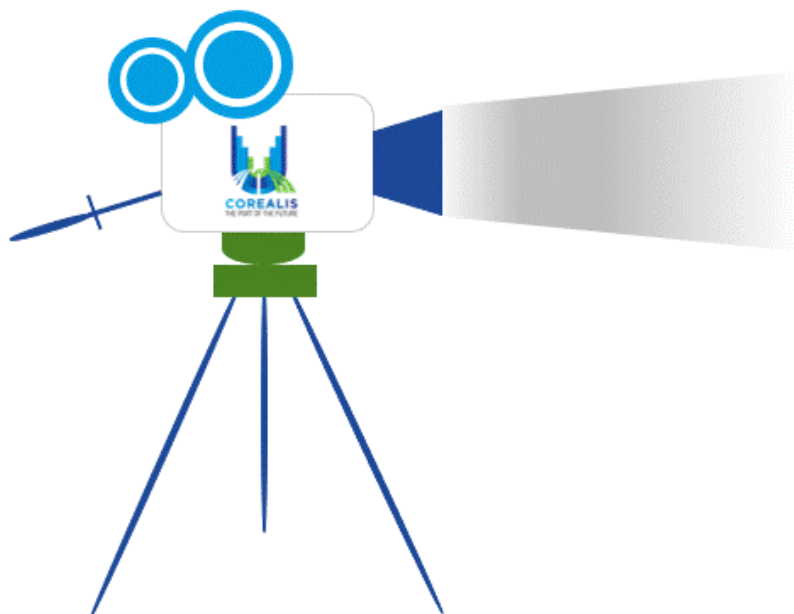


Matrix of COREALIS Demos & Innovations

	Hinterland connectivity			Intra-Terminal operations			Decision making/ Innovation			
	TAS	Brokerage platform	JIT Rail Shuttle Service	Cargo Flow Optimiser	Predictor / Asset Mgmt	PORTMOD	RTPORT	Energy assessment & Green cookbook	PoF Serious Game	Innovation Incubator
 Valencia	X		X							X
 Piraeus					X			X	X	
 Livorno						X	X		X	
 Antwerp		X		X						
 Haminakotka	X					X			X	



COREALIS video & partners



<https://www.youtube.com/watch?v=ljt8n0ec0o8>





www.corealis.eu



[corealis_eu](https://twitter.com/corealis_eu)



[COREALIS EU Project](https://www.youtube.com/COREALIS_EU_Project)



[Corealis_eu](https://www.linkedin.com/company/corealis_eu)



info@corealis.eu

THANK YOU FOR YOUR ATTENTION



Dr Angelos Amditis

✉ a.amditis@iccs.gr



This project has received funding from the European Union's horizon 2020 research and innovation programme under grant agreement No. 768994